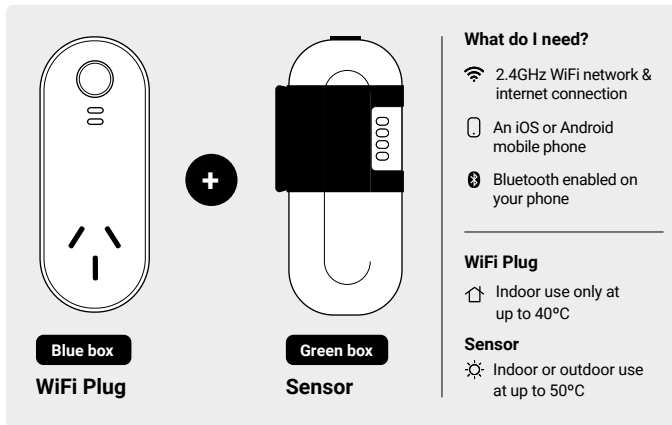
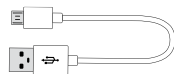


Getting to know Powersensor.

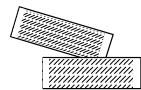
For wireless home energy monitoring



Quickstart & safety guide



USB charging cable



2 x reclosable fasteners

Safety First.

Powersensor is designed for safe DIY installation



Before you begin

Powersensor is attached to your home's existing electrical installation.

- DO NOT** use any tools to install Powersensor
- DO NOT** attach the sensor to damaged or exposed wires
- DO NOT** remove cover to access wires behind switchboard



DO NOT use a screwdriver



DO NOT install if you see electrical cables with exposed wires.



DO NOT use pliers or wirecutters



DO NOT install if outer insulation is damaged or frayed in any way.



DO NOT use any other tools



If you do not have an RCD safety switch **DO NOT** install without talking to a qualified electrician

If you have any doubt about your home's electrical installation do not install Powersensor without first talking to a qualified electrician.

Additional Support & Advice.

User guides, FAQ's and terms and conditions

You can find other helpful information and frequently asked questions relating to your Powersensor by searching the Help Centre at www.powersensor.com.au

The Help Centre covers many useful articles about using and installing Powersensor. If you have any questions about the safe use of this product, please contact Powersensor support via email: support@powersensor.com.au

Disposal and Recycling

All electronic devices have a limited lifespan and once it is reached they should be recycled. If disposed of incorrectly electronic waste materials are dangerous to our planet and to us.

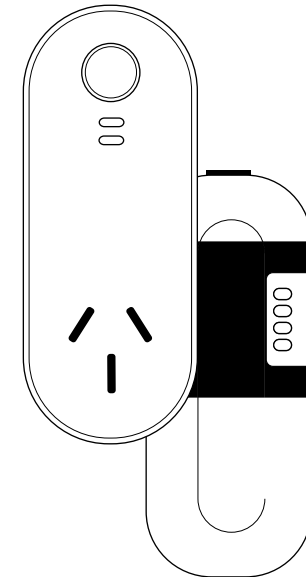
Electrical and electronic waste should not be disposed of with household rubbish. Check with your council or go to recyclingnearyou.com.au for recycling services and drop-off points located near you.

Apple, the Apple logo, iPhone, and iPad are trademarks of Apple Inc., registered in the U.S. and other countries and regions. App Store is a service mark of Apple Inc. Google Play and the Google Play logo are trademarks of Google LLC.

This guide may not be reproduced or copied without the written consent of Powersensor Pty. Ltd.
Copyright 2022 Powersensor Pty. Ltd



Quickstart & Safety Guide



Powersensor.

Solar and home energy monitoring solution



V2.00122/2 VUE

Where do I start

- 1 Charge your sensor before you begin installation
- 2 Scan the QR code and download the Powersensor App (iOS / Android)
- 3 Follow the in-app instructions to set up Powersensor

How to download the Powersensor app



Scan QR code to install app

OR

Search for
'Powersensor' on

Download on the
App Store

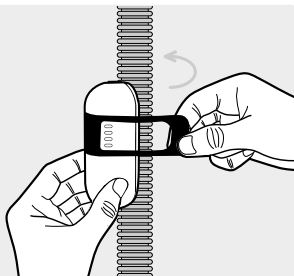
GET IT ON
Google Play

Attaching and removing the sensor(s)

For installation on cables and conduits use the silicone strap

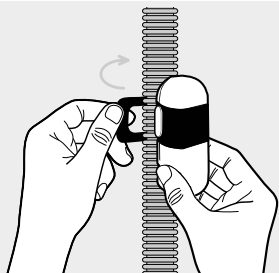
Mounting with silicone strap

Use one hand to hold the sensor in place and the other to wrap the strap around the sensor and cable. Hook the tag end of the strap to the notch of the sensor housing.



Removing silicone strap

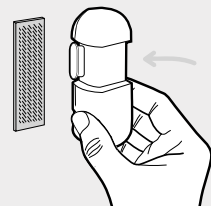
Use one hand to hold the sensor in place and the other to unhook the tag end of the strap from the sensor housing. The sensor will loosen from the mounting location and can then be removed.



Use the reclosable fastener to mount the sensor to flat surfaces

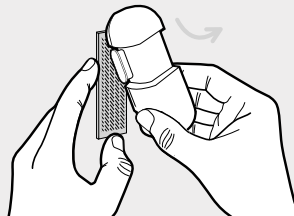
Mounting with the reclosable fasteners

Follow the in-app instructions to find the mounting position of the sensor. Stick one reclosable fastener on the underside of the sensor and the other on the final mounting position at your meter board. Press the sensor against the meter board fastener so that the two fasteners close and the sensor is held firmly in place.



Removing sensor

For sensors mounted using the reclosable fastener, use one hand to stabilise the attachment point (i.e. the rear panel of your meter box) and the other hand to slowly twist (do not pull) the sensor releasing it from the fastener.



Frequently Asked Questions.

How do I install Powersensor?

Powersensor is installed at your meter board and inverter if you have solar. The Powersensor App provides step by step instructions that guide you through the installation process.

How long do I need to charge my sensor for?

The battery in your sensor will be partially charged when it arrives, to get the longest usage you'll need to charge the sensor for at least 4 hours with the supplied cable.

How does Powersensor measure my energy usage?

Powersensor uses a 'learning' process to measure your home's energy usage. The learning process matches plug appliance data with sensor data, the data is then used to calculate your home's energy usage. The initial learning process takes up to ~48 hours to complete, use the appliance as much as you can during this time. After the initial learning use the appliance at least once per week for best results.

Can I move my plug or sensors?

The WiFi Plug should be installed at one of the recommended appliances. If it's not getting much use you can simply move it to a new spot. Avoid moving your sensor after installation. Go to the Help Centre if you'd like to know more about moving the sensor or plug.

What's my Powersensor's range?

Powersensor uses WiFi and Bluetooth to communicate and the range depends on a number of factors including physical obstructions and interference from other devices in your home. For best results they need to be about 30-40m from where your WiFi router is installed and the sensor(s) within about 10m (or 2 rooms apart) from where your WiFi Plug is located.

Visit Powersensor Help Centre for lots of other helpful information.
help.powersensor.com.au